



**VENKIS
COACHING**

*Hard work beats luck...
keep pushing forward!*

VENKATESH NETHI
DIRECTOR



www.venkiscoaching.com

+91 6301414541

SSC CGL Pre

Solution

General Intelligence and Reasoning

1. **Answer: (B)**
abs/abs/abs/abs

2. **Answer: (B)**
The logic followed here is, the 2nd letter of the word is immediate succeeding letter of the 1st letter, 4th letter is 6th succeeding letter of 3rd letter.

In option 'A': HIEK,
H + 1 = I, E + 6 = K
In option 'B': EFHB,
E + 1 = F, H + 6 = N
In option 'C': UVRX,
U + 1 = V, R + 6 = X
In option 'D': PQMS
P + 1 = Q, M + 6 = S

3. **Answer: (D)**
On substituting the mathematical signs according to the options, we have:
In option 'a':
 $18 - 6 = 4 + 3 - 2$
LHS:

$= 18 - 6$
 $= 12$
RHS:
 $= 4 + 3 - 2$
 $= 7 - 2$
 $= 5$
LHS \neq RHS
In option 'b':
 $18 = 6 + 4 + 3 \times 2$
RHS:
 $= 6 + 4 + 3 \times 2$
 $= 6 + 4 + 6$
 $= 16$
LHS \neq RHS
In option 'c':
 $18 \times 6 = 4 \times 3 \times 2$
LHS:
 $= 18 \times 6$
 $= 108$
RHS:
 $= 4 \times 3 \times 2$
 $= 24$
LHS \neq RHS

SCP-907344062-E

In option 'd':
 $18 + 6 = 4 \times 3 \times 2$
 LHS:
 $= 18 + 6$
 $= 24$
 RHS:
 $= 4 \times 3 \times 2$
 $= 24$
 LHS = RHS

Hence, option d.

4. **Answer: (D)**

The logic followed here is as follows:

In '17: 204',
 $= 17 \times 12$
 $= 204$
 In '23: [?]'
 $= 23 \times 12$
 $= 276$
 So, '276' is related to '23'.
 Hence, option d.

5. **Answer: (D)**

Given word: 'FABRICATIONS'.
 'ACTIONS' can be formed by using the letters of the word 'FABRICATIONS'.
 'ACTORS' can be formed by using the letters of the word 'FABRICATIONS'.
 'ABRASION' can be formed by using the letters of the word 'FABRICATIONS'.
 'AUCTIONS' cannot be formed by using the letters of the word 'FABRICATIONS' as there is no 'U' in the given word.

Hence, option d.

6. **Answer: (A)**

Given series:
 _ 1 0 4 3 9 1 0 _ 3 9 1 _ 4 _ 9 _ 0 4 3
 The complete series will be:
 9 1 0 4 3 / 9 1 0 4 3 / 9 1 0 4 3 / 9 1 0 4 3
 So, '9, 4, 0, 3, 1' will complete the given series.
 Hence, option a.

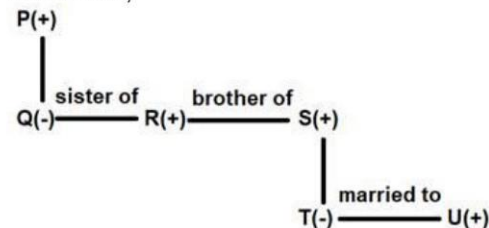
7. **Answer: (D)**



Hence, option d.

8. **Answer: (C)**

Given: P @ Q \$ R % S @ T # U
 On decoding the given expression,
 P is the father of Q, Q is the sister of R, R is the brother of S, S is the father of T, T is the wife of U
 The following family tree can be drawn from the given statements,



So, T is the granddaughter of P.

Hence, option c.

9. **Answer: (B)**

Floors which are not marbles = $28 + 12 = 40$
 There are '40' floors, which are not Marbles.
 Hence, option b.

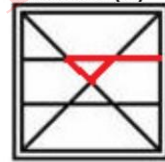
10. **Answer: (B)**

Second number = First number² - (first number × third number)

In (12, 108, 3)
 $108 = 12^2 - (12 \times 3)$
 $108 = 144 - 36$
 $108 = 108$
 In (16, 160, 6)
 $160 = 16^2 - (16 \times 6)$
 $160 = 256 - 96$
 $160 = 160$
 In option 'a': (14, 136, 5)
 $136 = 14^2 - (14 \times 5)$
 $136 = 196 - 70$
 $136 \neq 126$
 In option 'b': (18, 162, 9)
 $162 = 18^2 - (18 \times 9)$
 $162 = 324 - 162$
 $162 = 162$
 In option 'c': (9, 34, 6)
 $34 = 9^2 - (9 \times 6)$
 $34 = 81 - 54$
 $34 \neq 27$
 In option 'd': (15, 125, 4)
 $125 = 15^2 - (15 \times 4)$
 $125 = 225 - 60$
 $125 \neq 165$

Hence, option b.

11. **Answer: (B)**



12. **Answer: (B)**

The pattern followed here is as follows:

First half of the word is coded as the place value of the reverse letter as per English alphabetical series while second half of the word is coded as the place value of the given letter as per English alphabetical series.

In MATERIAL,

M	A	T	E	R	I	A	L
14	26	7	22	18	9	1	12

So, MATERIAL is coded as 1426722189112

In ENDURING,

E	N	D	U	R	I	N	G
22	13	23	6	18	9	14	7

So, ENDURING is coded as 2213236189147

Similarly, in PRODUCTS,

P	R	O	D	U	C	T	S
11	9	12	23	21	3	20	19

So, PRODUCTS is coded as 11912232132019

Hence, option b.

13. **Answer: (C)**

The correct arrangement of the given words in the order in which they appear in an English dictionary is:
 5- Macaroni, 2- Machete, 3- Macron, 1- Macular, 4- Macule

'5, 2, 3, 1, 4' is the correct dictionary order.

Hence, option c.

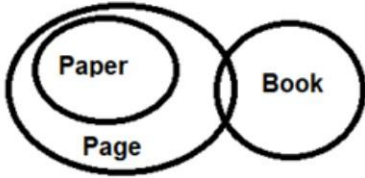
14. **Answer: (A)**

Given expression: $132 B 11 C 8 A 15 D [?] = 78$

Expression after replacing letter with symbols:
 $132 \div 11 + 8 \times 15 - [?] = 78$
 $12 + 120 - [?] = 78$
 $132 - 78 = [?]$
 $[?] = 54$

Hence, option a.
Answer: (D)

The following figures can be drawn:



I. Some Book is Paper: Does not follow (As shown in figure. There is no direct relation between Book and Paper)

II. No Book is Paper: Does not follow (As shown in figure. There is no direct relation between Book and Paper).

Here, conclusion I and conclusion II form a complimentary pair, therefore either conclusion I or conclusion II follows.

Hence, option d.

Answer: (B)

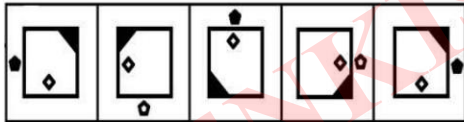
The logic followed here is as follows:

The shaded portion inside the smaller square is moving one places(in corner) in anti-clockwise direction in every step.

Rhombus is moving two places in clockwise direction in every step.

Pentagon: In first step pentagon is moving one places in anti-clockwise direction, then in second step it is moving two places in anti-clockwise direction and so on. Also, in alternate step it is getting shaded.

The complete figure series is show below:



Hence, option b.

Answer: (C)

The logic followed here is:

The 1st letter of each letter-cluster is the seventh succeeding letter of the 1st letter of the previous letter-cluster, the 2nd letter of each letter-cluster is the third preceding letter of the 2nd letter of the previous letter-cluster, the 3rd letter of each letter-cluster is the fourth preceding letter of the 3rd letter of the previous letter-cluster and the 4th letter of each letter-cluster is the fifth preceding letter of the 4th letter of the previous letter-cluster as per the English alphabetical series.

1st letter of each letter cluster, $F + 7 = M$, $M + 7 = T$, $T + 7 = A$, $A + 7 = H$, $H + 7 = O$

2nd letter of each letter cluster, $T - 3 = Q$, $Q - 3 = N$, $N - 3 = K$, $K - 3 = H$, $H - 3 = E$

3rd letter of each letter cluster, $E - 4 = A$, $A - 4 = W$, $W - 4 = S$, $S - 4 = O$, $O - 4 = K$

4th letter of each letter cluster, $M - 5 = H$, $H - 5 = C$, $C - 5 = X$, $X - 5 = S$, $S - 5 = N$

So, 'OEKN' will come in place of question mark.

The completer series is:

FTEM, MQAH, TNWC, AKSX, HHOS, **OEKN**

Hence, option c.

Answer: (D)

The correct mirror image of the given combination when placed at 'AB' is as follows:



Hence, option d.

Answer: (D)

The logic followed here is shown below.

(First number $\times 2$) $\geq - 1$

In option 'A': $3.5 - 342$

$(3.5 \times 2) \geq - 1 = 342$

$7 \geq - 1 = 342$

$343 - 1 = 342$

$342 = 342$

In option 'B': $6 - 1727$

$(6 \times 2) \geq - 1 = 1727$

$12 \geq - 1 = 1727$

$1728 - 1 = 1727$

$1727 = 1727$

In option 'C': $4 - 511$

$(4 \times 2) \geq - 1 = 511$

$8 \geq - 1 = 511$

$512 - 1 = 511$

$511 = 511$

In option 'D': $4.5 - 730$

$(4.5 \times 2) \geq - 1 = 730$

$9 \geq - 1 = 730$

$729 - 1 = 730$

$728 \neq 730$

Hence, option d.

Answer: (B)

The logic followed here is as follows:

Each letter is replaced with its 2nd succeeding letter. The letters are then arranged as per English alphabetical order.

For 'VORTEX',

V	O	R	T	E	X
X	Q	T	V	G	Z
G	Q	T	V	X	Z

For 'DRAWING',

D	R	A	W	I	N	G
F	T	C	Y	K	P	I
C	F	I	K	P	T	Y

Similarly, for 'TRICKED',

T	R	I	C	K	E	D
V	T	K	E	M	G	F
E	F	G	K	M	T	V

So, 'TRICKED' is written as 'EFGKMTV'.

Hence, option b.

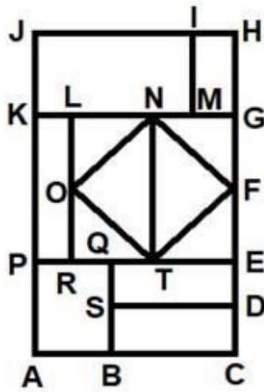
Answer: (A)

As, Colosseum is a famous monument in Rome, Italy. Similarly,

Eiffel Tower is a famous monument in Paris, France.

Hence, option a.

Answer: (C)



Number of Quadrilaterals in the given figure are: ABQP, APEC, BQEC, BSDC, SDEQ, ACHJ, IMHG, PEHJ, PRLK, REGL, TFNO, TNGE, TNLr, TNKP, KPEG, GHJK, MIJK and ACGK.

So, there are 18 quadrilaterals in the given figure.
Hence, option c.

23. **Answer: (C)**

The logic followed here is as follows:

In option 'A', '3457 - 24199':

$$\text{LHS: } 3457 \times 7$$

$$= 24199$$

$$\text{LHS} = \text{RHS}$$

In option 'B', '2563 - 17941':

$$= 2563 \times 7$$

$$= 17941$$

$$\text{LHS} = \text{RHS}$$

In option 'C', '4532 - 32724':

$$= 4532 \times 7$$

$$= 31724$$

$$\text{LHS} \neq \text{RHS}$$

In option 'D', '5126 - 35882':

$$= 5126 \times 7$$

$$= 35882$$

$$\text{LHS} = \text{RHS}$$

Hence, option c.

24. **Answer: (C)**

Given series: 21, 35, 56, ?, 119, 161

The logic followed here is difference between numbers are consecutive multiples of '7' starting from '14'.

$$21 + 14 = 35$$

$$35 + 21 = 56$$

$$56 + 28 = 84$$

$$84 + 35 = 119$$

$$119 + 42 = 161$$

So, 84 is the missing number from the given series.

Hence, option c.

25. **Answer: (A)**

In such questions, first consider common side in both dices.

Here, '11' and '15' are the two common sides in both the figures.

In clockwise direction, the sequence will be (11, 15 and 13) in figure 'a'.

In clockwise direction, the sequence will be (11, 15 and 12) in figure 'b'.

Clearly, '13' is on the face opposite to the one showing '12'.

Hence, option a.

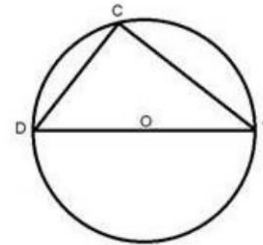
26. **Answer: (B)**

$$\text{Cost price of the laptop} = 40500 \div 0.9 = ₹45,000$$

$$\text{So, percentage of profit earned if the laptop was sold for ₹52,200} = \{(52200 - 45000)/45000\} \times 100 = (7200/45000) \times 100 = 16\%$$

Hence, option b.

27. **Answer: (B)**



As we know angle subtended by a diameter at any point on the circumference of the circle is always 90°

Therefore, DV is the diameter of the circle

$$\text{So, chord DV} = \text{diameter of the circle} = 2 \times \text{radius} = 2 \times 16 = 32 \text{ cm}$$

Hence, option b.

28. **Answer: (D)**

Let the smallest number be '5x'.

$$\text{So, the largest number} = 5x \times (12/5) = 12x$$

$$\text{ATQ, } 5x + 12x = 8500$$

$$\text{Or, } 17x = 8500$$

$$\text{So, } x = 500$$

$$\text{Now, required difference} = 12x - 5x = 7x = 7 \times 500 = 3500$$

Hence, option d.

29. **Answer: (C)**

Let efficiency of each boy and each girl be 'b' units/day and 'g' units/day, respectively

$$\text{Therefore, } 6b \times 24 = 12g \times 24$$

$$\text{Or, } g = 6b/12 = 0.5b$$

$$\text{Therefore, combined efficiency of 5 boys and 8 girls} = 5b + 8 \times 0.5b = '9b' \text{ units/day}$$

$$\text{Total work} = 6b \times 24 = '144b' \text{ units}$$

$$\text{Required time taken} = (144b/9b) = 16 \text{ days}$$

Hence, option c.

30. **Answer: (D)**

$$\text{Given: } 64^x = 256^y$$

$$\text{So, } (4^3)^x = (4^4)^y$$

$$\text{Or, } 3x = 4y$$

$$\text{So, } x = (4y/3)$$

$$\text{Also, } x \times y = 48 \text{ (Given)}$$

$$\text{So, } (4y/3) \times y = 48$$

$$\text{So, } y^2 = 36$$

So, $y = \pm 6$ (Since, 'x' and 'y' are both natural numbers, we may discard $y = -6$)

$$\text{So, } y = 6$$

$$\text{And } x = 4 \times 6 \div 3 = 8$$

$$\text{So, required value} = \{(5 \times 8) + (3 \times 6) - (6 \times 8)\} = 10$$

Hence, option d.

31. **Answer: (B)**

$$\text{Total weight of all the students in the class} = 25 \times 70 = 1750 \text{ kg}$$

$$\text{Total weight of all the students in the class when three new students joined the class} = 28 \times (70 + 2)$$

$$= 28 \times 72 = 2016 \text{ kg}$$

$$\text{So, required average} = \frac{2016 - 1750 - 66}{2} = \frac{200}{2} = 100 \text{ kg}$$

Hence, option b.

32. **Answer: (A)**

Quantitative Aptitude

Amount received when ₹1,200 is invested at simple interest of 15% p.a. = $1200 + 1200 \times 0.15 \times 2 = 1200 + 360 = ₹1,560$

So, amount received when ₹1,560 is invested at compound interest of 10% p.a. = $1560 \times (1 + 10/100)^2 = 1560 \times (11 \times 11)/(10 \times 10) = 1560 \times 1.21 = ₹1,887.60$

So, interest earned from compound interest = $1887.60 - 1560 = ₹327.60$

Hence, option a.

33. **Answer: (A)**

Let the cost price of the table be ₹100x'

So, marked price of the table = $100x \times 1.3 = ₹130x'$

And, selling price of the table = $100x \times 0.91 = ₹91x'$

ATQ,

$$91x = 546$$

$$\text{So, 'x' = 6}$$

$$\text{So, discount given} = 130x - 91x = 39x = 39 \times 6$$

$$= ₹234$$

Hence, option a.

34. **Answer: (A)**

Distance travelled by car in the first 5.5 hours = $5.5 \times 50 = 275$ km

Distance travelled by car in next 3 hours = $3 \times 45 = 135$ km

Distance travelled by car in last 5 hours = $5 \times 80 = 400$ km

$$\text{So, average speed of the car} = \frac{\text{total distance travelled}}{\text{total time taken}} = \frac{275+135+400}{5.5+3+5} = \frac{810}{13.5} = 60\text{km/hr}$$

Hence, option a.

35. **Answer: (D)**

Let the edge length of the square = 'a' cm

So, perimeter of the square = $4a = 92$

$$\text{So, } a = 92 \div 4 = 23$$

So, area of the square = $23 \times 23 = 529\text{cm}^2$

Hence, option d.

36. **Answer: (A)**

$$12 \div 4 \text{ of } 5 \times 7.5 + 17.5 \times 8 - 12.5 \times 5$$

$$= 12 \div 20 \times 7.5 + 140 - 62.5$$

$$= (3/5) \times 7.5 + 140 - 62.5$$

$$= 4.5 + 140 - 62.5$$

$$= 82$$

Hence, option a.

37. **Answer: (C)**

$$\text{Required ratio} = (98 + 75 + 125 + 102):(82 + 107 + 73 + 98) = 400:360 = 10:9$$

Hence, option c.

38. **Answer: (D)**

$$\text{Given: } x + \frac{1}{x} = \sqrt{6}$$

On squaring both sides, we have;

$$x^2 + \frac{1}{x^2} + 2 \times x \times \frac{1}{x} = 6$$

$$x^2 + \frac{1}{x^2} = 6 - 2 = 4$$

Now, on subtracting 2 from both sides, we have;

$$x^2 + \frac{1}{x^2} - 2 = 2$$

$$\left(x - \frac{1}{x}\right)^2 = 2$$

$$x - \frac{1}{x} = \sqrt{2}$$

$$\text{So, required value} = x^2 - \frac{1}{x^2} = \left(x - \frac{1}{x}\right)\left(x + \frac{1}{x}\right)$$

$$= \sqrt{6} \times \sqrt{2} = 2\sqrt{3}$$

Hence, option d.

39. **Answer: (C)**

Concept used:

$$\sin(A - B) = \sin A \cos B - \cos A \sin B$$

So, required value = $(\sin 75^\circ \cos 45^\circ - \cos 75^\circ \sin 45^\circ)$

$$= \sin(75^\circ - 45^\circ)$$

$$= \sin 30^\circ$$

$$= (1/2)$$

Hence, option c.

40. **Answer: (A)**

Selling price of article 'B' = $250 \times 1.4 \times 0.75$

$$= ₹262.50$$

Selling price of article 'D' = $500 \times 1.36 \times 0.75 = ₹510$

So, required difference = $510 - 262.50 = ₹247.50$

Hence, option a.

41. **Answer: (C)**

Divisibility rule of '9' = Sum of all digits should be a multiple of '9'.

For option 'A' = $8 + 2 + 7 + 6 + 2 + 1 = 26$

For option 'B' = $8 + 2 + 7 + 8 + 7 + 3 = 35$

For option 'C' = $7 + 6 + 2 + 8 + 3 + 1 = 27$ (Multiple of 9)

For option 'D' = $9 + 7 + 2 + 2 + 3 + 2 = 25$

Hence, option c.

42. **Answer: (D)**

The value of $\frac{2}{3} \sim 0.6667$

The value of $\frac{10}{6} \sim 0.8333$

The value of $\frac{6}{7} \sim 0.8571$

The value of $\frac{11}{12} \sim 0.9167$

So, $\frac{11}{12}$ is the largest.

Hence, option d.

43. **Answer: (D)**

$$\tan 75^\circ = \tan(45^\circ + 30^\circ)$$

$$\frac{\tan 45^\circ + \tan 30^\circ}{1 - \tan 45^\circ \tan 30^\circ}$$

$$= \frac{1 + \frac{1}{\sqrt{3}}}{1 - \frac{1}{\sqrt{3}}}$$

$$= \frac{\sqrt{3} + 1}{\sqrt{3} - 1} \times \frac{\sqrt{3} + 1}{\sqrt{3} + 1}$$

$$= \frac{3 + 1 + 2\sqrt{3}}{3 - 1}$$

$$= \frac{2(2 + \sqrt{3})}{2}$$

$$= (\sqrt{3} + 2)$$

Hence, option d.

44. **Answer: (D)**

$$x^4 + \frac{1}{x^4} = 47$$

Using $(a + b)^2 = a^2 + b^2 + 2ab$

$$\text{Since, } \left(x^2 + \frac{1}{x^2}\right)^2 = x^4 + \frac{1}{x^4} + 2$$

$$\text{Or, } \left(x^2 + \frac{1}{x^2}\right)^2 = 47 + 2$$

$$\text{Or, } \left(x^2 + \frac{1}{x^2}\right)^2 = 49$$

$$\text{So, } x^2 + \frac{1}{x^2} = 7$$

$$\text{And, } \left(x + \frac{1}{x}\right)^2 = x^2 + \frac{1}{x^2} + 2$$

$$\text{Or, } \left(x + \frac{1}{x}\right)^2 = 7 + 2$$

$$\text{Or, } \left(x + \frac{1}{x}\right)^2 = 9$$

So, $x + \frac{1}{x} = 3$

Since, $a^3 + b^3 = (a + b)(a^2 + b^2 - ab)$

So, $x^3 + \frac{1}{x^3} = \left(x + \frac{1}{x}\right)\left(x^2 + \frac{1}{x^2} - 1\right)$

$= 3 \times (7 - 1)$

$= 3 \times 6$

$= 18$

Hence, option d.

45. **Answer: (B)**

Let the length of each side of the triangle be 'a' cm

So, $24\sqrt{3} = (a\sqrt{3}/2)$

Or, $a = 48$

Inradius of an equilateral triangle $= (a/2\sqrt{3}) = 48 \div 2\sqrt{3}$

$= 8\sqrt{3}$ cm

Hence, option b.

46. **Answer: (C)**

Let 'a' = 100

So, 40% of 'a' = 40 = 'b'

And, 40% of 40 = 16

So, required percentage = $(16/100) \times 100 = 16\%$

Hence, option c.

47. **Answer: (C)**

Let the radius of the cone = 'r' cm

Then, volume of the cone = $(1/3) \times \pi \times r^2 \times 7$

$= \left(\frac{1}{3}\right) \times \left(\frac{22}{7}\right) \times r^2 \times 7 = 733\frac{1}{3}$

Or, $(22r^2/3) = (2200/3)$

So, $r^2 = (2200/3) \div (22/3) = 100$

So, $r = 10$ (Since, radius of the cone cannot be negative therefore we can discard the negative root)

Therefore, diameter of the same cone = $2r = 2 \times 10$

$= 20$ cm

Hence, option c.

48. **Answer: (A)**

Let the original quantity of milk and water in the mixture be '11x' litres and '3x' litres, respectively

After replacing half the mixture with 30 litres of water,

Quantity of milk remaining in the mixture = $11x \div 2$

$= '5.5x'$ litres

Quantity of water remaining in the mixture = $3x \div 2 + 30$

$= (1.5x + 30)$ litres

According to the question,

$$\frac{5.5x}{1.5x + 30 + 5.5x} = \frac{55}{100}$$

Or, $550x = 385x + 1650$

So, $165x = 1650$

So, $x = 1650 \div 165 = 10$

So, original quantity of the mixture = $11x + 3x = 14x$

$= 14 \times 10 = 140$ litres

Hence, option a.

49. **Answer: (A)**

Number of votes which were cast = 1500×0.72

$= 1080$

So, number of valid votes which were cast = $1080 \times 0.8 = 864$

Hence, option a.

50. **Answer: (D)**

Required percentage = $\{(40 + 40 - 60)/(40 + 40)\} \times 100 = 25\%$

$= 25\%$

Hence, option d.

General Awareness

51. **Answer: (D)**

Kye Gompa, the largest center of Buddhist learning in the Western Himalayas, is situated in the state of **Himachal Pradesh**.

Kye Gompa, also known as Key Monastery, is located in the **Spiti Valley** of Himachal Pradesh. It is a Tibetan Buddhist monastery that was founded over 1,000 years ago and is one of the oldest and largest in the region.

52. **Answer: (B)**

Mir Qasim's soldiers met the English army troops directed by Major Munro in 1764. The Indian forces were defeated by the English forces under **Major Hector Munro** at Buxar on October 22, 1764, in a closely contested battle. The English campaign against Mir Kasim was short but decisive.

53. **Answer: (B)**

Charles Cornwallis was the Governor-General of India from 1786 to 1793, and he introduced the Permanent Settlement in Bengal in 1793, which was a significant land revenue system in British India.

54. **Answer: (A)**

The total length of the coastline of the Indian mainland, including Andaman and Nicobar Islands and Lakshadweep Islands, is approximately **7,516.6 kilometers** or 4,671.5 miles.

55. **Answer: (C)**

Firuz Shah Tughluq brought two Ashoka Pillars to Delhi from Topra and Meerut (now in Ambala district) to Delhi and reestablished the pillar of Topra in a palace, near the mosque of Firuzabad.

The pillar of Meerut was reestablished at Bada Hindu Rao hospital of Delhi, near a mound 'Kashke-Shikar'.

56. **Answer: (C)**

Badruddin Tyabji was the first Muslim to be elected as the President of 'Indian National Congress' in the year **1887**.

57. **Answer: (B)**

Chilka Lake is a lagoon on the mouth of River Mahanadi in Odisha. Odisha coast is also called **Northern Circars**.

58. **Answer: (C)**

Veto Power of the President:

A bill passed by the Parliament can become an act only if it receives the assent of the President.

Veto Power of the President of India is guided by Article 111 of the Indian Constitution.

When such a bill is presented to the President for his assent, he has **three alternatives**.

- 1.) He may give his assent to the bill, or
- 2.) He may withhold his assent to the bill, or
- 3.) He may return the bill (if it is not a Money bill) for reconsideration by Parliament.

However, if the bill is passed again by the Parliament with or without amendments and again presented to the President, the President must give his assent to the bill.

59. **Answer: (B)**

Meningitis fever is an inflammation of the **brain and spinal cord membranes**, typically caused by an infection.

A bacterial or viral infection of the fluid surrounding the brain and spinal cord usually causes swelling.

Meningitis is usually caused by a viral infection but can also be bacterial or fungal. Vaccines can prevent some forms of meningitis.

Symptoms include headache, fever and stiff neck.

60. **Answer: (A)**

In India, the shortest day and longest night of the year will fall on **December 22**. Due to Earth's tilt toward the

Sun, which is approximately 23.5 degrees, the winter solstice happens.

The **December solstice** marks the shortest day of the year in the Northern Hemisphere and the longest day in the Southern Hemisphere.

61. **Answer: (C)**
The joint stream of Alaknanda and Bhagirathi flowing Devprayag onwards is known as Ganga. Bhagirathi emerges from **Gaumukh glacier**, 18 km away from Gangotri under the Shivalinga Peak
62. **Answer: (D)**
A foam is a type of colloid in which gas bubbles are dispersed throughout a liquid or solid. A **sponge** is a good example of a solid foam, as it is made up of a network of gas – filled pores within a solid matrix. Cheese is an example of a colloidal suspension, as it contains dispersed particles of fat and protein in water. Mist is an example of a colloidal dispersion, as it contains small droplets of water or other liquids dispersed in air. Butter is an example of an emulsion, as it is made up of tiny droplets of fat dispersed in water.
63. **Answer: (D)**
Four bone fragments of Lord Buddha, known as Kapilvastu Relics, discovered by William Claxton Peppé in 1898 at Piprahwa, Uttar Pradesh, will be taken to Thailand after 30 years. The relics were excavated from the ancient city of Kapilavastu. According to Buddhist beliefs, Buddha attained salvation in Uttar Pradesh's Kushinagar at the age of 80, and his relics were divided among different communities to erect stupas, with Ashoka later enshrining them in numerous stupas to spread Buddhism.
64. **Answer: (B)**
Madhya Pradesh government unveils an innovative 'bag-less school' policy, challenging educational norms. Starting 2024-25, this initiative mandates a bag-free day each week. The state government issues weight limits for school bags, ranging from 1.6 to 2.2 kg for classes 1 and 2, to 2.5 to 4.5 kg for classes 9 and 10. This move aims to alleviate the physical burden on students, fostering a more comfortable and holistic learning environment.
65. **Answer: (C)**
Kathmandu recently hosted the multinational military exercise 'Shanti Prayas IV,' becoming a hub for global peacekeeping efforts. The event involved army representatives from 19 nations engaged in UN Peacekeeping missions, emphasizing collaborative dedication to global peace and security. Co-hosted by the Nepali Army and the U.S. Indo-Pacific Command, the exercise highlighted the robust military cooperation between Nepal and the United States.
66. **Answer: (A)**
Hyderabad-based **Goldsikka Pvt Ltd** in collaboration with a city-based startup **Open cube Technologies Pvt Ltd** has set up a gold ATM in **Begumpet, Hyderabad**.
· This is **India's first and the world's first real-time Gold ATM**.
· This Gold ATM supplies in denominations ranging from 0.5 gms to 100 gms.
· Customers can use their debit, credit cards to buy the yellow metal from the gold ATM.
67. **Answer: (D)**

Warli painting is a form of tribal art mostly created by the tribal people from the North Sahyadri Range in **Maharashtra**, India.

Warli paintings are known for their simplistic style, using basic geometric shapes such as circles, triangles, and squares, and stick figures to depict scenes of everyday life, nature, and social customs. It is considered one of the oldest forms of tribal art in India.

68. **Answer: (A)**
India has a **single** Constitution for Union and all the States. The Constitution promotes the unity and convergence of the ideals of nationalism. The single Constitution empowers only the Parliament of India to make changes in the Constitution. It empowers the Parliament even to create a new state or abolish an existing state or alter its boundaries.
69. **Answer: (C)**
The **Aitareya Brahmana** is a Brahmana text associated with the Rigveda, one of the oldest and most important texts in the Hindu scriptures. Brahmanas are ancient Vedic texts that provide explanations, interpretations, and rituals associated with the hymns and rituals of the Vedas. Rig Veda is the oldest Veda. It comprises of 10 Mandals.
70. **Answer: (A)**
Conrad Kongkal Sangma, the leader of the National People's Party (NPP), has been sworn in as the **Chief Minister of Meghalaya** for the second time in a row. The Governor of Meghalaya Phagu Chauhan has administered the oath of office and secrecy to him. Prestone Tynsong and Sniawbhalang Dhar have been sworn in as Deputy Chief Ministers of Meghalaya. The NPP has emerged as the single-largest party in the 2023 elections after winning 26 seats of the state's 60 seats.
- | | |
|----------------------|-------------------------------|
| Meghalaya | |
| Statehood Day | 21 st January 1972 |
| Capital | Shillong |
71. **Answer: (D)**
The **Kashmiri wooden architecture**, made from walnut and deodar wood, has flourished from the 11th century A.D. Kashmiri lattice work, such as 'Acchedar', 'Khatamband', and 'Azlipinjra', is some of the most exquisite woodwork.
72. **Answer: (A)**
The National Commission for Minorities is a **statutory body** set up under the National Commission for Minorities Act, 1992. It consists of a Chairperson, a Vice-Chairperson and 5 members and all of them shall be from amongst the minority communities.
Tenure: 3 years
Note: The Government of India has declared six religions namely, Muslims, Christians, Sikhs, Buddhists and Parsis (Zoroastrian) and Jain as religious minorities in India.
73. **Answer: (D)**
The **8th Dr L M Singhvi Memorial Lecture** has been hosted by the OP Jindal Global University (JGU), on the theme 'Universal Adult Franchise: Translating India's Political Transformation into a Social Transformation'.
· Vice President of India Jagdeep Dhankhar was the chief guest of the event.

· During the event, **Chief Justice of India (CJI) Dr Justice D.Y. Chandrachud** said that "**The Constitution of India is a feminist document and a product of true Indian imagination**".

The Lecture commemorated the life and work of diplomat, jurist, lawyer, and Parliamentarian L M Singhvi (1931-2007).

74. **Answer: (A)**

The **Aravalli range** divides the Rajasthan plain into two parts. The area to the east of Aravalli is called **Mewar**. The area to the west of Aravalli is called Marwar.

The westernmost region of these plains lies in the **Great Indian Desert**. A semi-arid plain lies to the east of the Thar Desert and is called Rajasthan Bagar. Luni is the only south-west flowing river in this region. Sambhar Lake is the largest lake **lying north of the Luni basin**.

75. **Answer: (D)**

Vitamins are a group of substances that are needed for normal cell function, growth, and development. There are 13 essential vitamins. This means that these vitamins are required for the body to work properly.

The list of vitamins and their scientific names is as follows:

- Vitamin A (Retinol)
- Vitamin C (Ascorbic acid)
- Vitamin D (Calciferol)
- Vitamin E (Tocopherol)
- **Vitamin K (Phylloquinone)**
- Vitamin B1 (thiamine)
- Vitamin B2 (riboflavin)
- Vitamin B3 (niacin)
- Vitamin B6 (pyridoxine)
- Vitamin B12 (cyanocobalamin)
- Pantothenic acid (B5)
- Biotin (B7)
- Folate (folic acid or B9)

English Language

76. **Answer: (B)**

LOFTY means tall or imposing. **SHORT** (less in height) will be its antonym. Thus, B is the right answer.

Plentiful - abundant. Scarce - few in number. Hasty - hurried; rushed.

77. **Answer: (C)**

DISAGREEMENT refers to disharmony or conflict. **ACCORD** (agreement) will be its antonym. Thus, C is the right answer.

Might - strength. Reliance - dependence. Span - time period.

78. **Answer: (A)**

The correct spelling of the word is **SUFFRAGE** (the right to vote in a democracy). Thus, A is the right answer.

79. **Answer: (D)**

The correct spelling of the word is **INDEPENDENCE** (self-sufficiency). Thus, D is the right answer.

80. **Answer: (A)**

UNSETTLED means nervous or tense. **EDGY** is its synonym. Thus, A is the right answer.

Perilous - dangerous. Tasty - having good taste; delicious. Certain - sure.

81. **Answer: (B)**

The word **BYSTANDER** means one who observes an incident without participating in it. The word **ONLOOKER** expresses the right meaning of the given word. Thus, B is the right answer.

Comrade - partner; friend. Quibble - minor criticism or complaint. Cohort - a group of people who share a common future.

82. **Answer: (C)**

The idiom **LET THE CAT OUT OF THE BAG** means to reveal a secret. Thus, C is the right answer.

None of the other options correctly conveys the meaning of the idiom.

83. **Answer: (C)**

The idiom **AT DEATH'S DOOR** means to be on the verge of one's death. Thus, C is the right answer.

84. **Answer: (A)**

In A, replace the object pronoun **THEM** with the subject pronoun **THEY** as it forms the subject of the verb **GROW**. Thus, A is the right answer.

85. **Answer: (D)**

The sentence is grammatically correct and free of error. Thus, D is the right answer.

86. **Answer: (B)**

We need a continuous form verb to fit in the **IS + VERB present continuous tense** construction. **WORRYING** (alarming) will fit here contextually as the sentence tells us how the rising intensity of extreme heat in north-west Europe is disturbing. Thus, B is the right answer.

Draining - exhausting. Providing - supplying. Stopping - halting.

87. **Answer: (B)**

We need a base form verb to follow the modal verb **CAN**. The sentence tells us how the extreme heat can exacerbate respiratory conditions. **WORSEN** (intensify) will fit here contextually. Thus, B is the right answer.

Transform - change. Elude - avoid. Amass - collect.

88. **Answer: (C)**

We need helping verb to precede the main verb **DAMAGED**. The plural **HAVE** will fit here as it agrees with the plural subject **HEATWAVES**. Thus, C is the right answer.

ARE and **IS** are used in passive voice constructions, while this part of the sentence is in active voice. **HAS** is singular.

89. **Answer: (A)**

We need an adjective to modify the noun **DELAYS**. **SEVERE** (drastic) will fit here as the sentence talks of the magnitude of train delays. Thus, A is the right answer.

Lofty - grand. Tiny - very small. Diverse - varied.

90. **Answer: (B)**

We need an adjective to modify the nouns **TEMPERATURES**. The sentence talks about how the rising temperatures that led to disruptions in rail service. **SOARING** (rising very high) will fit here contextually. Thus, B is the right answer.

Looming - about to happen (of something unpleasant). Demeaning - belittling. Prying - interfering.

91. **Answer: (A)**

A person who has become dependent on a drug or a substance is known as an **ADDICT**. Thus, A is the right answer.

Edict - an official order or proclamation issued by a person in authority. Epic - a long poem narrating the

- journeys of heroes. Atheist - one who denies the existence of God.
92. **Answer: (B)**
TAKE ON (to assume a responsibility) will fit here as the sentence tells us how the listener is asked whether he can assume the role of managing the hospital. Thus, B is the right answer.
Take down - dismantle. Take off - leave. Take after - resemble.
93. **Answer: (B)**
The sentence seeks to convey that there was a fire in the building on the last day of the speaker's stay there. The phrase BROKE OUT (began suddenly) can replace the underlined phrase in the given sentence. Thus, B is the right answer.
Broke into - entered without permission. Broke up - ended a relationship. Broke down - stopped functioning properly.
94. **Answer: (B)**
QPR is the correct sequence of the parts of the sentence. The given part establishes the subject of the sentence - HIS WORK. Q follows by telling us how his work was challenged. PR conclude as a pair by telling us that his idea still appeared in popular journals. Thus, B is the right answer.
95. **Answer: (B)**
(B) is the correct answer. The sentence is in the passive voice. The rules to change the passive voice to passive is given below:
I. The object clause will become the subject clause. Here, the subject A HOUSE will become the object and the object THE LATE HEADMASTER will become the subject and begin the sentence.
II. Replace HAS BEEN LEFT with HAS LEFT.
III. Remove the conjunction BY before THE LATE HEADMASTER.
96. **Answer: (A)**
Option A is the right answer.
The sentence is in direct speech and in an interrogative mood. To convert this sentence to the indirect speech, follow these rules:
I. Remove the question mark and the inverted commas.
II. Replace the reporting verb SAID TO with ASKED. The preposition TO is redundant after ASKED, so it is to be removed. Begin the indirect speech sentence with the reporting speech clause I ASKED THE RECEPTIONIST.
- III. The simple past tense DO YOU HAVE past perfect tense HAD.
IV. The second person subjective pronoun YOU will change to the third person subjective pronoun HE.
V. Introduce the conditional IF before the question part of the sentence.
VI. The syntax of a sentence in indicative mood will be used: I ASKED THE RECEPTIONIST + IF + subject (HE) + verb clause HAD + object of verb HIS CONTACT NUMBER.
97. **Answer: (B)**
The sentence is in the indicative mood and passive voice. Follow the rules below to convert a sentence in the indicative mood to active voice:
I. The subject clause will become the object clause. Here, the subject THE ADDRESS will change to the object, and the object THE AGENT will change into the subject and begin the sentence.
II. Replace HAS BEEN FORGOTTEN with HAS FORGOTTEN.
III. Remove the conjunction BY before THE AGENT. Option B is the right answer.
98. **Answer: (D)**
An ANTIDOTE is a remedy that is given to counteract the effects of a poison. Thus, D is the right answer.
ANTISEPTIC - a substance that prevents the growth of infectious microorganisms.
ANTHOLOGY - a collection of poems or stories.
ANTIPATHY - a feeling of strong dislike.
99. **Answer: (C)**
We need the base form of a verb to come after the modal verb WILL. The sentence talks about seeing the details on the packaging. FIND (to see where something is, either by chance or by searching) will fit here. Thus, C is the right answer.
The remaining options are contextually incorrect.
APPROVE - to agree to something.
APPEAR - to come into sight.
EXIST - to be or to live.
100. **Answer: (C)**
We need a singular verb to agree with the singular subject pronoun IT. OCCURRED (crossed one's mind) will fit here contextually as the sentence talks about how the speaker realised that the small plane crashes took place often. Thus, C is the right answer.
Implied - suggested. Allowed - enabled. Remarkd - commented.